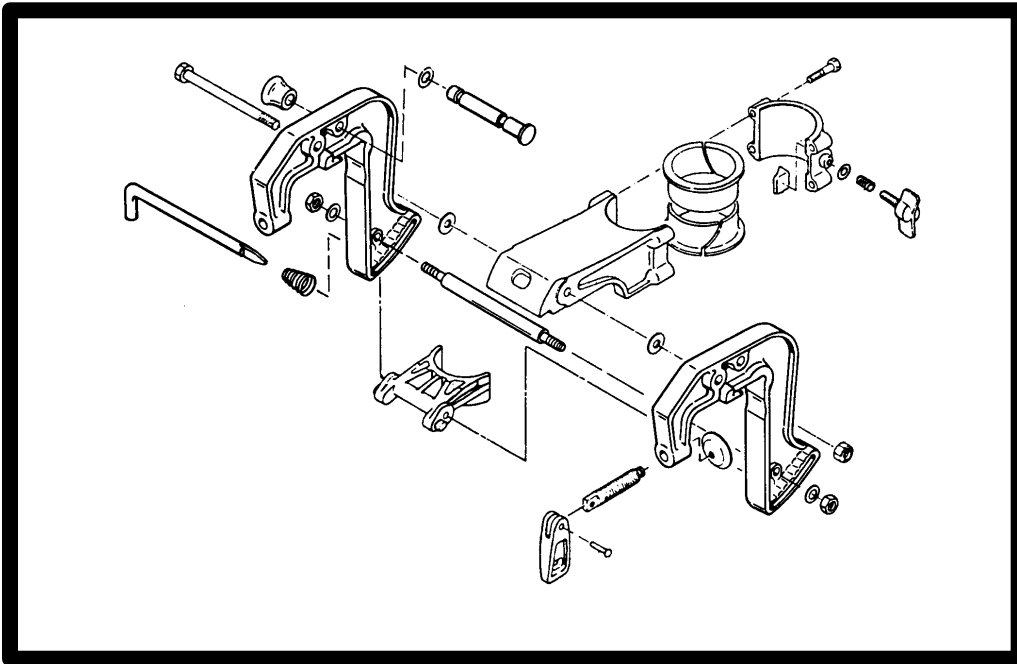




MID-SECTION



5



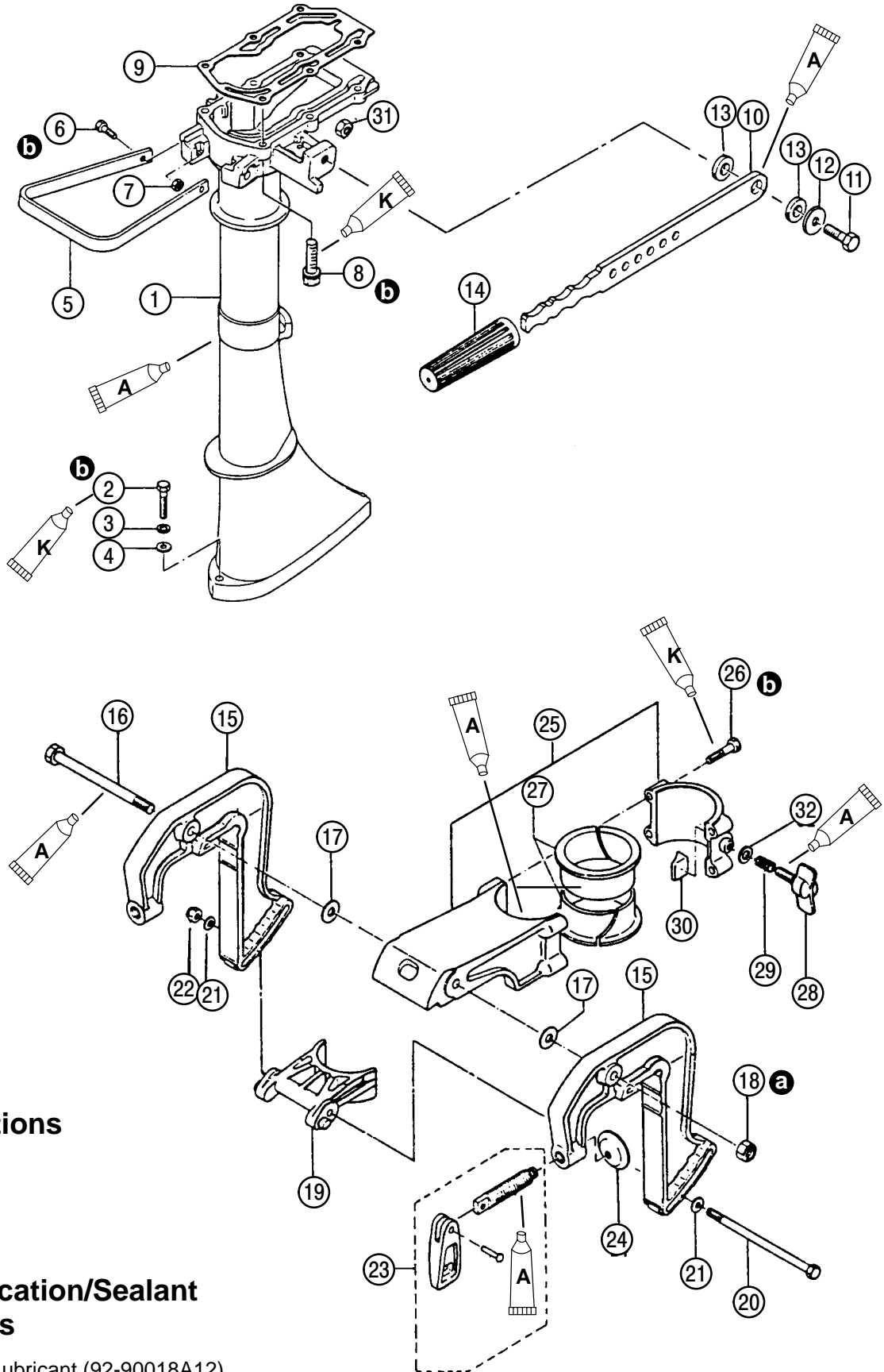
Table of Contents

	Page
Mid-Section Components (Design 1)	5-1
Mid-Section Components (Design 2)	5-2
Shift Linkage Components (Shiftable Gearcase)	5-3



Mid-Section Components (Design 1)

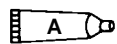
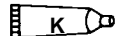
- 1 - Housing
- 2 - Bolt
- 3 - Lockwasher
- 4 - Washer
- 5 - Carrying Handle
- 6 - Bolt (2)
- 7 - Nut (2)
- 8 - Bolt and Washer (6)
- 9 - Gasket
- 10- Steering Handle
- 11- Bolt
- 12- Plate
- 13- Damper
- 14- Grip
- 15- Bracket
- 16- Bolt
- 17- Washer
- 18- Nut
- 19- Bracket
- 20- Bolt
- 21- Washer
- 22- Nut
- 23- Thumb Screw Assembly (2)
- 24- Washer (2)
- 25- Swivel Bracket
- 26- Bolt (4)
- 27- Bushing
- 28- Screw
- 29- Spring
- 30- Pad
- 31- Nut
- 32- Washer



Torque Specifications

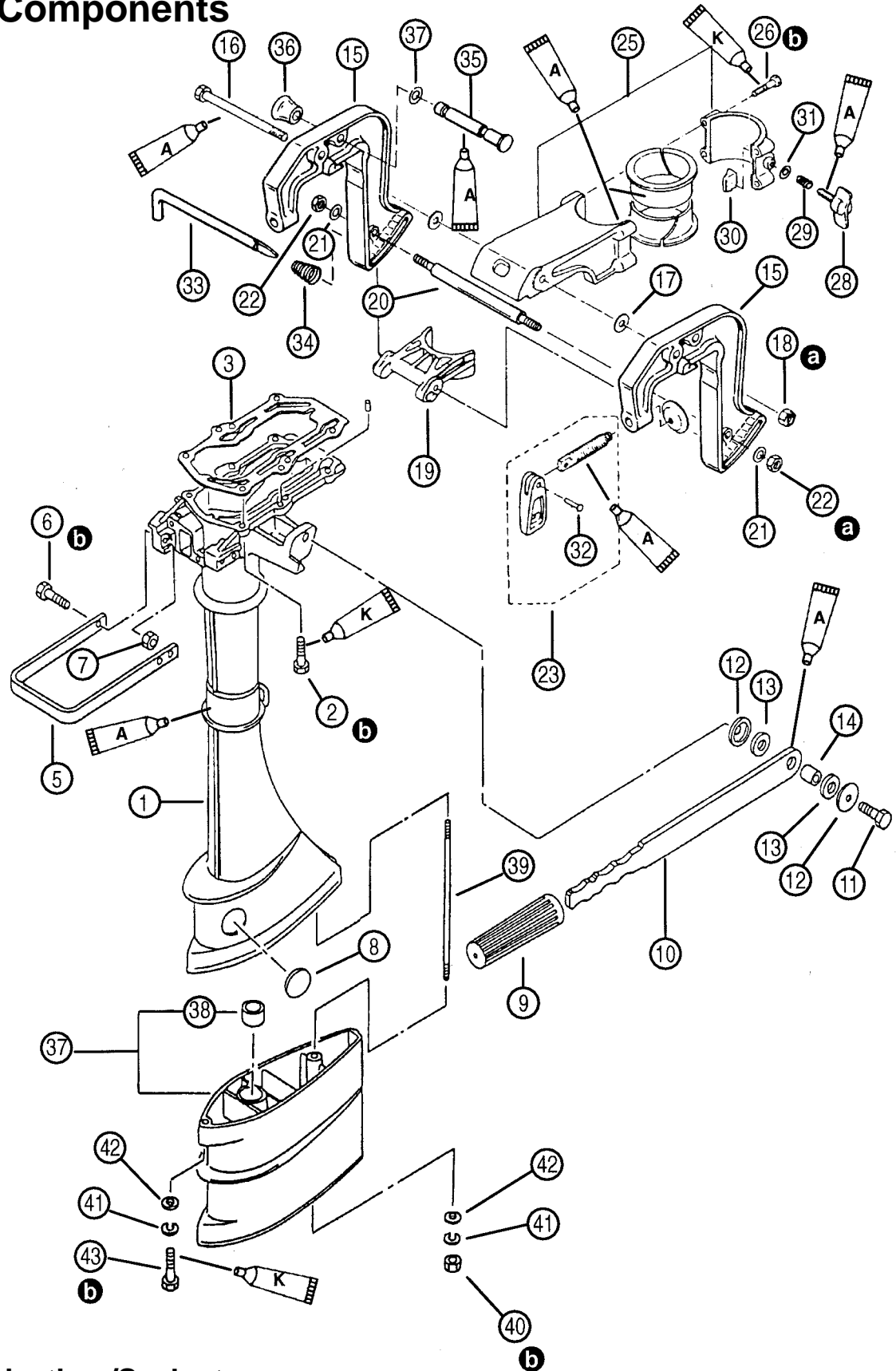
- a** 120 lb. in. (13.5 N·m)
- b** 50 lb. in. (5.6 N·m)

Quicksilver Lubrication/Sealant Application Points

-  2-4-C Marine Lubricant (92-90018A12)
-  Perfect Seal (92-34227-1)

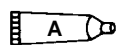


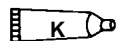
Mid-Section Components (Design 2)



- 1 - Housing
- 2 - Bolt (6)
- 3 - Gasket
- 4 - Dowel Pin (2)
- 5 - Handle
- 6 - Bolt (3)
- 7 - Nut (3)
- 8 - Grommet
- 9 - Grip
- 10- Handle
- 11- Bolt
- 12- Washer (2)
- 13- Damper, Rubber (2)
- 14- Spacer
- 15- Bracket (2)
- 16- Bolt
- 17- Washer
- 18- Nut
- 19- Bracket
- 20- Rod
- 21- Washer (2)
- 22- Nut (2)
- 23- Thumb Screw (2)
- 24- Washer (2)
- 25- Swivel Bracket
- 26- Bolt (4)
- 27- Bushing (2)
- 28- Screw
- 29- Spring
- 30- Friction Pad
- 31- Washer
- 32- Pin
- 33- Thrust Rod
- 34- Spring
- 35- Tilt Stopper
- 36- Knob
- 37- Extension Housing
- 38- Bushing
- 39- Stud
- 40- Nut
- 41- Lockwasher (2)
- 42- Washer (2)

Quicksilver Lubrication /Sealant Application Points

 2-4-C Marine Lubricant (92-90018A12)

 Perfect Seal (92-34227-1)

Torque Specifications

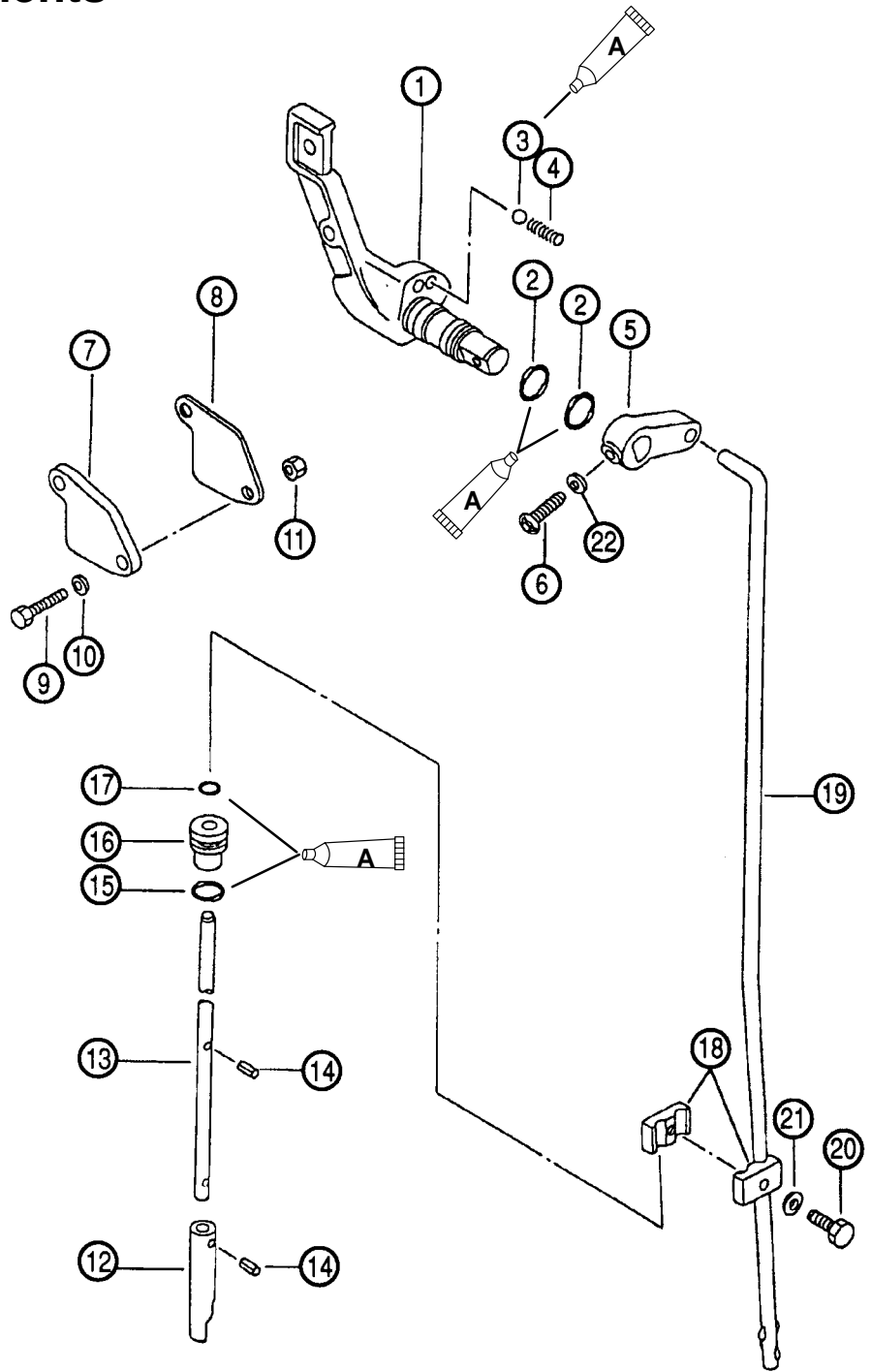
a 120 lb. in. (13.5 N·m)

b 50 lb. in. (5.6 N·m)

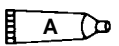


Shift Linkage Components (Shiftable Gearcase)

- 1 - Shift Lever
- 2 - O-ring
- 3 - Detent
- 4 - Spring
- 5 - Shift Rod Lever
- 6 - Screw
- 7 - Cover
- 8 - Gasket
- 9 - Bolt (2)
- 10- Washer (2)
- 11- Nut (2)
- 12- Cam
- 13- Cam Rod
- 14- Pin
- 15- O-ring
- 16- Bushing
- 17- O-ring
- 18- Joint
- 19- Shift Rod
- 20- Bolt
- 21- Washer
- 22- Washer



Quicksilver Lubrication/Sealant Application Points



2-4-C Marine Lubricant (92-90018A12)